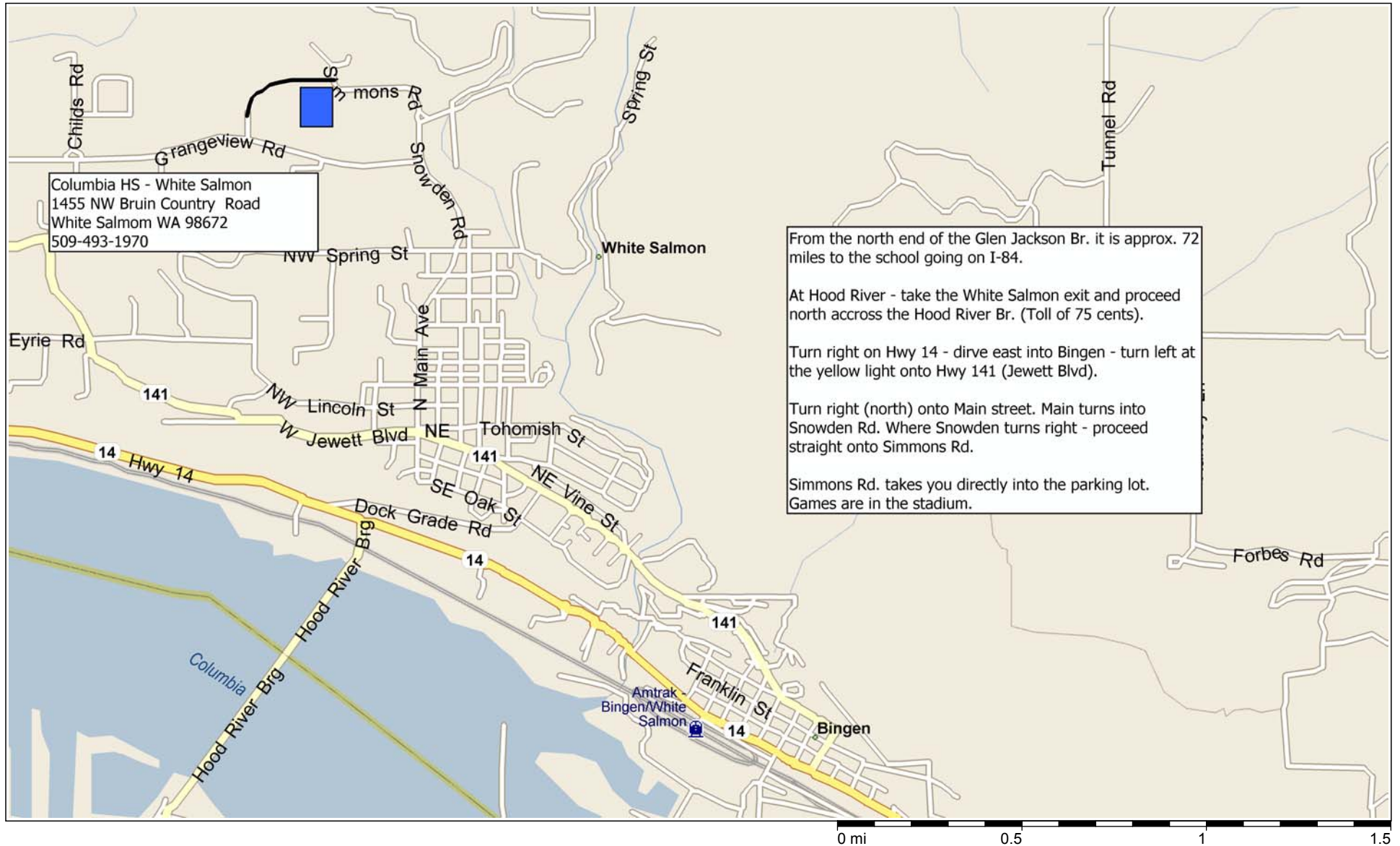


# Columbia HS, White Salmon



Columbia HS - White Salmon  
 1455 NW Bruin Country Road  
 White Salmon WA 98672  
 509-493-1970

From the north end of the Glen Jackson Br. it is approx. 72 miles to the school going on I-84.

At Hood River - take the White Salmon exit and proceed north across the Hood River Br. (Toll of 75 cents).

Turn right on Hwy 14 - drive east into Bingen - turn left at the yellow light onto Hwy 141 (Jewett Blvd).

Turn right (north) onto Main street. Main turns into Snowden Rd. Where Snowden turns right - proceed straight onto Simmons Rd.

Simmons Rd. takes you directly into the parking lot. Games are in the stadium.